



JLE

▶ GROUP

**CAPABILITY
STATEMENT.**



Giving you the power

JLE Group is a dynamic electrical company with a broad reach across the electrical industry.

The capacity of our company is underpinned by our electrical engineering teams; experienced in both network contestable design as a level 3 authorised service provider, and process and control engineering in the industrial hard rock and fixed plant industries.

JLE's ability to understand the engineering behind the project ensures that our electrical construction and delivery teams achieve key milestones, with complete understanding of our clients needs. We ensure that our projects are delivered safely and efficiently every time.



Our company consists of highly skilled and equipped full-time electricians, linesman and HV cable jointers, switchboard manufacturers and subcontractors.

JLE Group employ up to 100 staff consisting of full time, casual and subcontract positions. JLE have a commitment to finding the right staff to create the best culture.



JLE Group is a regionally based electrical engineering and contracting company based across NSW and southern QLD. Our Company specialises in engineering, design and construction of electrical infrastructure, including construction and maintenance of fixed plant process equipment and private high voltage and low voltage networks.

Our Business has been built around great people with a great culture and a single vision to be the best regional engineering contracting service provider.



JLE can turn-key all aspects of your project, providing

- ↙ Level 3 Design Services
- ↙ Level 1 Infrastructure Works
- ↙ Level 2 Works

The expanse of expertise across our workforce assures that you can start and finish your project with JLE Group.



246

**TOTAL PROJECTS
COMPLETED**

Our mission is to be the best electrical engineering and contract company in New South Wales, focusing on turn key engineering and installations and ongoing maintenance services.

Our strategy is simple

Great people

Great planning

Great clients

Clarity and focus.

CLIENTS

We value our clients and believe 'repeat business' is the best business'.

DISCIPLINE

Financial discipline 'producing outcomes on a budget'.

EFFICIENCY

We get things done fast, understanding 'time is money'.

SOLUTIONS

We are problem solvers always searching for 'efficient solutions'.



OUR VALUES
ARE WHO WE ARE.

JLE Group holds a reputable position in the industry as a leading electrical contracting company that values safety, quality workmanship and complete customer satisfaction. Our mission is to be the service provider of choice for all turn-key solutions in the electrical industry from HV power line construction to connection, commissioning and ongoing maintenance.

SAFETY

JLE Group is committed to leading the industry in safety standards. With a dedication to training, continued development and the sophistication of our internal management systems, we produce a culture committed to maintaining ZERO HARM to people and the environment.

EMPLOYEES

The JLE Group workforce - our greatest asset, is engaged and values planning, clarity and focus. We equip our staff with the best tools, education and training which qualifies us to handle the challenges and complexities of all projects. We maintain a positive corporate culture by conveying honesty, integrity and nurturing and rewarding innovation and ideas.

QUALITY

We understand that client satisfaction is the key to successful business operations. Our workmanship and execution are regarded among the highest quality in the industry. We provide the planning, ongoing communications and execute our projects with precision.

INTEGRITY

We are committed to operating with un-compromised honesty and character.

SERVICE

JLE Group understands the importance of nurturing and investing in client relationships. We value our clients and recognise that repeat business is the best business. We vow to meet or exceed customer expectations on every project.

LEADERSHIP & INNOVATION

JLE Group will continually strive for innovative ideas and best practice. We aim to meet our clients' unspoken needs.

COMMUNITY

Our commitment to the local communities where we work and reside is of high priority. JLE Group will continue to invest generously in the communities in which we do business.

A photograph of two construction workers in high-visibility orange and grey work clothes and white hard hats. They are working on a site, with one worker on the left wearing a wide-brimmed hat and the other on the right wearing sunglasses and gloves. They are positioned in front of a large piece of machinery, possibly a crane or hoist, with a thick steel cable visible. The background shows a white utility vehicle and a clear sky.

**WE ARE
COMMITTED TO
OPERATING WITH
UNCOMPROMISED
HONESTY AND
CHARACTER.**



ENGINEERING & DESIGN.

JLE Group is equipped with a skilled workforce who are dedicated to deliver engineering solutions for our clients.

JLE Group boasts extensive experience in the private and public sector for electrical design, installation and commissioning projects as well as maintenance works from instrumentation through to high voltage networks.

We have a high level of understanding of process control equipment with the ability to develop process control systems.

Our methodical approach to problem solving and developing outcomes ensures that we provide our clients with long term benefits.

Our range of level 3 design services include:

- ❖ Urban and rural residential, commercial and industrial subdivisions
- ❖ Removal and/or relocation of overhead and underground electrical assets and infrastructure
- ❖ Connection of load for individual and mixed use residential, retail, commercial and industrial sites
- ❖ Public lighting networks, including new works and modifications to existing sites





- ❖ Private high voltage customer connections
- ❖ JLE Group also prepares design packages that are both financially feasible and technically compliant. JLE undertakes in-house protection and earthing studies based on our customers' specific site requirements.
- ❖ Our level 3 designers will work closely with our in-house high voltage maintenance and level 1 construction teams, offering our customers the complete solution.

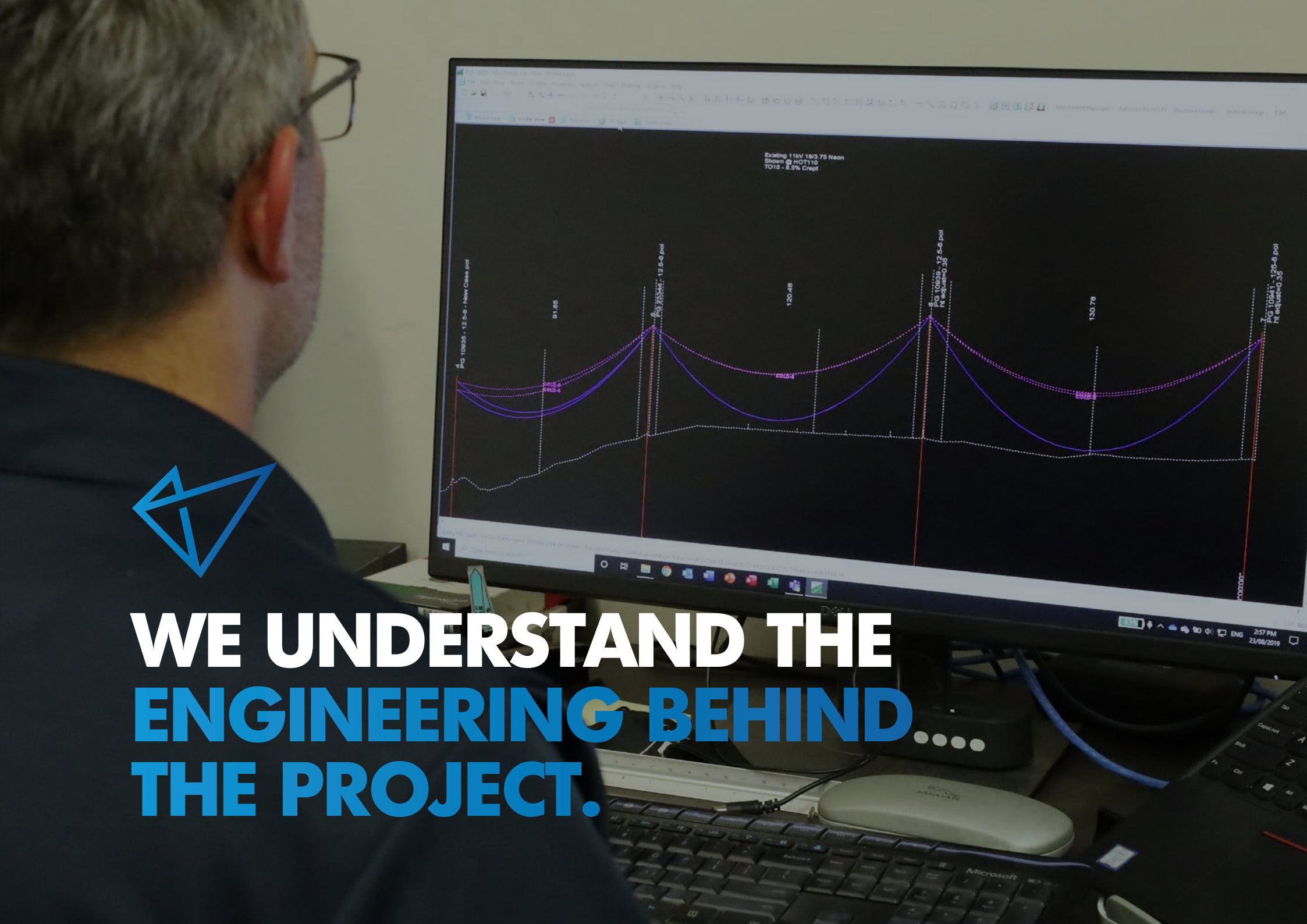
Engineering Process and Control

- ❖ Integration of various technologies to provide automated control of plant and equipment
- ❖ Commissioning of all facets of electrical distribution and process control equipment
- ❖ Electrical and instrumentation design, installation, maintenance and repair
- ❖ Installation of PLC, SCADA and CCTV systems that integrate seamlessly to provide a complete process control package
- ❖ Process improvement analysis
- ❖ Protection and discrimination studies
- ❖ Compliance auditing
- ❖ Remote monitoring of plant and equipment
- ❖ Development of specification and work scopes to suit client requirements
- ❖ Functional safety evaluation and design
- ❖ Arc flash hazard assessment and engineering
- ❖ Hazardous area assessment and maintenance.

PROJECTS.

PROJECT	CLIENT	VALUE
Dixon Library Upgrade	University New England – Armidale	\$1.3 Million
Bellview Rugby Field Lighting	University New England – Armidale	\$800k
Taronga Western Plains Zoo	David Payne Constructions	\$800k
Taronga Western Plains Zoo Lions Pride Enclosure	David Payne Constructions	\$400k
Uranquinty Zone Substation	David Payne Constructions	\$800k
Orana Mall Shopping Centre Redevelopment Stage 1	Comet (Aust) Pty Ltd	\$550k
Orana Mall Shopping Centre Redevelopment Stage 2 & 3	Comet (Aust) Pty Ltd	\$1.8 Million
Wellington Rapid Build Prison	Star	\$700k
Dubbo Base Hospital S3	Hansen & Yunken	\$1.3 Million
John Gilbert Water Treatment Plant	Dubbo Regional Council	\$400k

In addition, JLE have also completed over 1,000 new subdivision lots in Bathurst, Orange, Dubbo, Parkes & Mudgee across the past three (3) years.

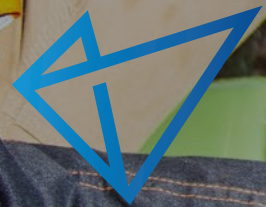


**WE UNDERSTAND THE
ENGINEERING BEHIND
THE PROJECT.**

PROJECTS.

PROJECT	CLIENT	VALUE
Whylandra Waste Facility Power upgrade	Dubbo Regional Council	\$120k
Keswick Estate Subdivision – Stage 1, 2 & 3	Dubbo Regional Council	\$600k
Mitchell Highway & Capstan Roundabout upgrade	Dubbo Regional Council	\$450k
Silo Electrical upgrades - Trangie	Grain Corp	\$900k
Silo Electrical upgrades – Coonamble	Grain Corp	\$500k
Essential Energy Network School upgrades	Department of Commerce	\$850k
Power and substation upgrades	CSA Mine Cobar	\$220k
15+ schools across the Central West	Laing O'Rourke	\$880k
NSW Rural Fire Service Training Academy	David Payne Constructions	\$1.7 Million
Blayney Sealink Pty Ltd	Metziya Pty Ltd	\$413.5k

In addition, JLE have also completed over 1,000 new subdivision lots in Bathurst, Orange, Dubbo, Parkes & Mudgee across the past three (3) years.



**WE DELIVER HIGH QUALITY
SOLUTIONS FOR ALL CLIENTS.**

UTILITY SERVICES.



JLE Group ensures its success in delivering complex projects efficiently, every time, by applying our philosophy to always establish and build an open collaborative partnership with our clients. We ensure constant communication exists throughout the design and construction process.

JLE specialises in medium to large electrical installations in the following industries:

- ✦ Mining, hard rock quarrying and process plant and equipment
- ✦ Infrastructure; both HV and LV network and customer owned assets providing design, installation and ongoing maintenance services
- ✦ Water; providing turn-key engineering and installation works associated with large and medium sized water and sewer pumping stations
- ✦ Hazardous area design and installation solutions; including grain handling and rail load out and petrochemical installations and maintenance
- ✦ Rail infrastructure; installation of distance signing infrastructure including power supplies for rail crossings.



**WE UNDERSTAND
TIME IS MONEY.**

Our commitment to providing and ensuring a safe workplace for our employees is paramount.

Our Quality Management System and WHS Management System is certified to International Standards ISO 9001:2008 and ISO AS/NZS 4801:2001.

JLE Group is also certified to International Standards as an integrated Quality Management and WHS Management System ISO 4801/9001:2015.

JLE Group is committed to protecting our employees through the compliance of WHS legislations, demonstrating due diligence and the application of industry-based WHS procedures. For all people who may be affected by our work, safety will always take precedence.

Safety audits and inspections are conducted regularly to ensure JLE Group are operating at the optimal level of compliance and to ensure constant improvement.



Our Safety Focus

- Implement proactive health and safety management systems and strategies
- Integration of WHS management at our project planning stages
- Encourage and enforce the occupational risk management process of hazard identification, risk assessment and risk control
- Monitor and review risk controls to maintain their effectiveness
- WHS decision making involves structured communication, consultation and training with our employees
- Provide ongoing education for our employees to enable them to work in the safest possible manner
- Engage and support our workforce to ensure they comply with the legislated and company WHS responsibilities - working safety and reporting incidents in line with company procedures and policies
- Maintain our ZERO INCIDENTS record.



**SAFETY
FIRST.
ALWAYS.**





ELECTRICAL CONSTRUCTION.

JLE Group, is a Level 1 authorised service provider, who delivers a high-quality turn-key solution for all commercial and industrial clients.

We liaise with all authorities and provide our customers with a certified Level 3 Design for all overhead and/or underground power line works. JLE Group will also supply and install the dedicated transformer and/or power supply as required.





Level 1 overhead and underground services available:

- ❖ Overhead powerline construction
- ❖ Level 3 certified design
- ❖ Supply and installation of pole mounted substations
- ❖ Overhead transmission line construction
- ❖ Underground high & low voltage reticulation
- ❖ Supply and install of pad mounted substations
- ❖ High & low voltage jointing
- ❖ Underground and overhead high & low voltage mining applications

Level 2 overhead and underground services available:

- ❖ Supplying and installing consumer mains
- ❖ Mains switchboards
- ❖ All metering facilities as required, including supply and installation of final sub circuits and dedicated protection devices
- ❖ Review and implement high voltage operating protocol, including HV asset and maintenance procedures.
- ❖ Supply HV maintenance services for all high voltage customers.

RECENT PROJECTS.

UNIVERSITY OF NEW ENGLAND



Dixon Library Upgrade

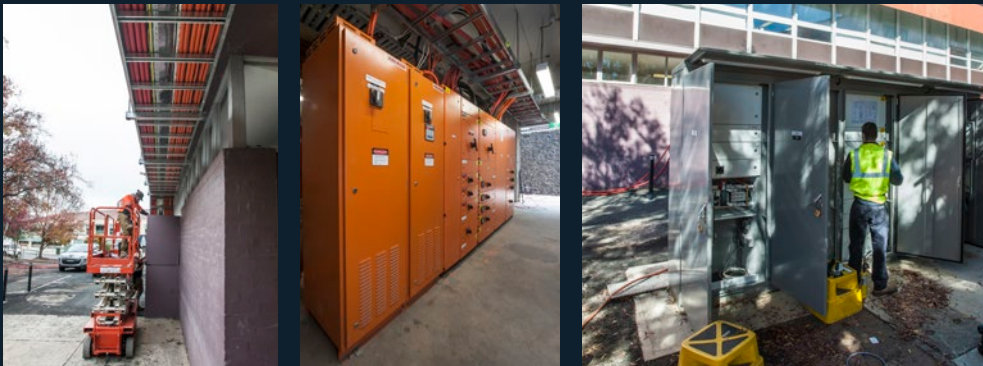
These works were conducted throughout the pristine grounds of UNE which includes in and around the famous Booloominbah House, a significant Australian heritage building. JLE undertook substantial excavation and remediation works throughout this area with no harm caused. Planning and communication was key for this project.

Works included:

- Upgrade of all HV and LV infrastructure, including HV network, LV main switchboard and metering.
- The commissioning of several UNE precincts which included complex

LV and HV outages. These works required major planning, negotiations with the Energy Authority and constant communication and re-planning with UNE to accommodate campus students, exams and functions.

Works were completed successfully, on time and to budget. JLE is proud to mention that we have built a successful and respectful working relationship with UNE and that we have since been awarded future projects.





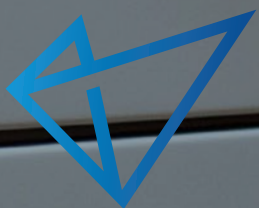
C3

DISTRIBUTION BOARD
SWITCHROOM
MAIN ISOLATOR

C4

C5

C6



**WE GUARANTEE YOUR
COMPLETE SATISFACTION.**

RECENT PROJECTS.

DAVID PAYNE CONSTRUCTIONS



Uranquinty Zone Substation

- Supply and install consumer mains
- Supply and install earth grid including connections to support structures
- Supply and install cable culverts
- Supply and install underground conduits
- Install support structures
- Install busbar throughout switching station
- Install landing spans
- Supply and install LV control cabling and protection boards
- Supply and install HV cable to new transformers
- Commissioning and final testing of installation in conjunction with Essential Energy staff.

RECENT PROJECTS.



Blayney Sealink

Upgrade of 11kV feeder line to Blayney Sealink Pty Ltd, works included:

- Install new gas switch
- Upgrade of poles, pole hardware and conductor from Blayney zone substation to Blayney

Sealink - approximately 12km.

- Specific works within the rail corridor included the re-conducting of overhead rail pass, line diversion & under bore of railway line for new underground cable route.



Comet (Aust) Pty Ltd – Orana Mall Dubbo

- Supply and install new LV switch gear to facilitate new LV re-arrangement works located in the HV substation.
- Supply and install of 15 new LED carpark lights situated throughout the new car park development.

- All level 2 electrical works for the stage 1 and 2 redevelopment project.
- Supply and install new substation to the redeveloped section of works, including the redirection of existing HV across the Mitchell Highway and into the development.

RECENT PROJECTS.

DAVID PAYNE CONSTRUCTIONS

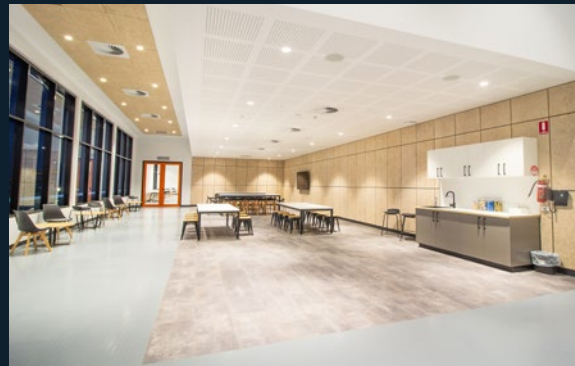


NSW Rural Fire Service Training Academy, Dubbo NSW

These project works were undertaken on the newly constructed NSW RFS Training Academy.

Works included:

- Installation of all internal and external lighting
- Main MSB and CT metering
- Security, access control and CCTV
- Fire detection system.



RECENT PROJECTS.

DAVID PAYNE CONSTRUCTIONS



Northern Inland Centre of Sporting Excellence, Tamworth NSW

These works included the augmentation of existing MSB and supply and installation of new control DB's. JLE completed all civil works, including the excavation, installation of conduit for electrical and comms as well as installation of all new sub-mains.

Installation of a 100-lux lighting system, with provision to upgrade to

300-lux in the future, to both the velodrome and athletics track. The luminaries were mounted on 30 metre poles around the playing fields.

This project also included the installation of new lighting and power to the amenities block, club house and car park.



MINING + TUNNELLING

JLE mining + tunnelling offer a complete range of specialised solutions for your tunnelling and mining needs.

JLE Group's dedicated electrical mining and tunnelling division specialises in electrical services and supplies for underground mining and tunneling projects across Australia. Our highly skilled and efficient team offer expertise and electrical solutions that reduce costs, minimise downtime, and increase productivity.



A complete range of specialised electrical solutions:

SUBSTATIONS

We can hire you a substation or sell you one. JLE Group is one of the largest substation manufacturers in Australia with a huge hire fleet for the mining and tunnelling industries and a fast turnaround on substations. Whatever your type or requirement, JLE Group can build it for you at a very competitive price.

TUNNELLING

HV Temporary Power

- ✔ Hire substations and cabling
- ✔ Lighting boxes
- ✔ Network connections
- ✔ Installation and HV termination starters

ELECTRICAL LABOUR HIRE

We provide solutions for fixed, short or long-term labour hire, and offer multi-skilled and highly qualified electricians (e.g. instrumentation, high-voltage, mill and underground), site supervisors, and complete crews. Our team operates in every state of Australia and is available for any site and any roster for mining and tunnelling.

SWITCHBOARD MANUFACTURING

JLE Group design and manufacture a wide variety of AS2081 compliant electrical switchboards and substations, 1,000V and 415V starter boards and distribution boards. We also provide full support including spare parts, installation and service.

GATE END BOXES AND STARTERS

- ✔ JLE Group manufacture a whole range of 1,000V starter boards, distribution boards and gate end boxes for hard rock mining and tunnelling industries.
- ✔ Boards are AS / NZS 2081 compliant and are manufactured to AS / NZS 3439
- ✔ Boards will be manufactured to AS / NZS 61439 by 2020
- ✔ Including; jumbo starters, pump starters, single and twin fan starters, 6 way DB's and 4 outlet gate end boxes.

TRAILING CABLE EXCHANGE AND REPAIRS

We supply all types of trailing / rubber cable for the mining and tunnelling industries. From 35 - 150mm 241.1 1000V cable to 11kV TBM cabling.

ELECTRICAL PRODUCTS FOR SALE AND HIRE

Our qualified electrical and communication engineering personnel offer a broad spectrum of specialised services including; drafting, detailed design and engineering, protection studies, electrical engineering and design, management plans, auditing and compliance, and we ensure your project complies to the highest regulatory requirements.

CONSTRUCTION AND PROJECT WORK

Our multi-skilled team of Project Managers, Project Supervisors and Project Electricians are experienced in the delivery of complete electrical and instrumentation projects, from design and installation through to commissioning and handover. No project is too big, too small, or too remote.



Extensive high voltage services:

- ✔ HV switching
- ✔ HV cable testing and commissioning (insulation resistance testing, ductor testing, VLF testing)
- ✔ HV substation testing and commissioning
- ✔ Overhead line modifications
- ✔ Pole top terminations
- ✔ Paper lead to XLPE crossover joining
- ✔ Onsite permanent substation installations (66kv, 33kv, 22kv and 11kv)
- ✔ XLPE cable installs and terminations (ABB cold shrink and Raychem heat shrink)
- ✔ Onsite and workshop substation repairs and overhauls
- ✔ Extensive experience with ABB, Schneider, GELPAC BV AMS & Lucy switchgear
- ✔ Terminations on HV drive



Dedicated testing and commissioning:

- ✔ Secondary injection of protection relays (Omicron CMC356, Dobel F6150A)
- ✔ VLF HV insulation testing and diagnostics (HVA60)
- ✔ Primary injection testing (Omicron CPC100)
- ✔ Cable testing, fault location and repairs (EZ-Thump12, Kyoritsu 3128, HVA60)
- ✔ Power quality recording and analysing (Fluke 435)
- ✔ Dissipation factor, tan delta, power factor measurement (Omicron CPC 100TD)
- ✔ Insulation resistance testing (Kyoritsu 3128)
- ✔ Infrared thermographics (FLIR P640)

ZERO LTIS

Safety is paramount and supported by a range of policies and procedures



ProBeck-IPS

Comprehensive Motor Protection and Control Relay

- ✔ The ProBeck-IPS Relay is an ISO 9001:2000 and AS2081 compliant, locally designed and manufactured, three-phase motor protection relay.
- ✔ It is a microcontroller based precision instrument with protection, advanced control features and starter logic.
- ✔ The relay is designed to cater for the low voltage motor protection market. The current transformers, including the core balance current transformers are external.
- ✔ The ProBeck-IPS relay is fully configurable with the aid of frontend software or a man machine interface unit (MMI).

Event records can also be downloaded with the aid of the laptop for further analysis.

✔ The relay has an onboard database where time and date stamped records are kept.

✔ Two types of records are kept namely fault records (35 last faults) and event records (1400 events).

✔ The front-end also has a data recorder and a spectrum analyser which could be used to analyse motor performance and supplied power quality respectively.



PROJECTS.

PROJECT	CLIENT	YEAR
Electrical design and construction of new warehouse	Cadia Warehouse	2018-2019
Temporary Power (Substations + Gate End Boxes)	WestConnex 3A	2019-Ongoing
Temporary Power (Substations)	NorthConnex	2018
Temporary Power (Substations + Cables)	Sydney Metro	2018-2019
Temporary Power (Substations + Cables)	WestConnex Mew M5	2018-2019
Electrical design and construction of substation and switchgear	CSA Mining Cooling Project	2019
Electrical construction and commissioning of process facility	Halls Creek Mill Upgrade	2018
Temporary Power (Substations and Cable).	Melbourne Metro CYP	2018-Ongoing

JLE Group Mining + Tunnelling service a complete range of projects.

MEET OUR TEAM.



**JOSH
LARGE**

Managing Director
josh.large@jle.net.au | 0404 299 905

Josh founded JLE in 2004. Since this time, he has grown the business considerably in the engineering and construction of electrical systems industry focusing on infrastructure. Josh is driven to continue the growth of engineering, underground and overhead powerline construction and industrial process control and manufacturing. Josh is passionate about JLE, and continually strives to identify opportunities that fit the profile of the business. Josh ensures that JLE Group always delivers on every commitment.



**ROWAN
MCGARRIGLE**

Business Manager
rowan@jle.net.au | 0418 360 556

Rowan has been a pivotal member of the JLE management team for more than a decade. He has been actively involved in the company's growth within his role as business manager. His role consists of leading the JLE office, tendering and managing customer contact teams. Rowan also leads, implements and audits the WHS, QA and environmental systems for the company and conducts the contractual review process for JLE contracts, ensuring that our projects meet the company's risk profile. Rowan has completed extensive lead auditing and contract administration training allowing JLE to be aware, and constantly in review, of the ever-changing policies and legislation that govern their industries.



**DAMIAN
ROOTES**

Electrical Manager
damian.rootes@jle.net.au | 0447 430 178

Damian commenced his career with JLE Group as an apprentice. His role has grown from tradesman, trade supervisor, electrical project manager, to his most recent position, electrical manager. Damian provides a high level of support to our senior and junior project managers and ensures that our electrical team has the required resources and support needed to deliver a successful project. Damian's experience in the industry and his ability to understand the importance of efficient outcomes for all, assures that we create value for our clients.



**MICK
RAY**

Senior Project Manager
mick.ray@jle.net.au | 02 6884 5973

Mick has been with JLE for over a decade. His experience as a dual qualified tradesman (Electrician, Linesman) has been invaluable to JLE's renowned reputation for quality and reliability. Mick manages the resources within our HV infrastructure business and understands the industry requirements for safety and quality. Mick has over 20 years' experience within the industry.



**BEN
WILLIAMS**

Power Manager
ben.williams@jle.net.au | 0417 486 021

Ben has worked in the electrical distribution industry for over 20 years. Previous roles as team leader and regional manager in our local area assures that Ben understands company best-practice and realises the benefits for our clients. Ben's many years of experience has seen him manage and approve budgets of large-scale projects from inception, through to the delivery phase. Ben's ability to 'see it through the eyes of our clients' ensures JLE delivers the best value to all clients, large and small.



**STEVE
NUGENT**

Mining + Tunnelling Manager

Steve brings more than 10 years' engineering, project and contract management experience to JLE Group. He is a trade qualified electrician, specialising in commercial electrical installations, and has extensive experience working in the mining industry.



**BROCK
HARRIS**

Senior Project Manager
brock.harris@jle.net.au | 0447 442 684

Brock has been with JLE for over 10 years. During this time Brock has held roles as a tradesman, leading hand, electrical supervisor and most recently senior project manager. Brock has been hands-on with and managed multiple projects from inception, design, through to final testing and commissioning. He understands the importance of project resource continuity to deliver a project with minimal disruptions. Brock respects our clients' needs and always delivers what he promises.



**PETER
JOHNSON**

Senior Project Mining Manager

With almost a decade of experience across the electrical industry, Peter brings a wealth of knowledge to JLE Group. Specialising in project management from design to handover and high voltage installations and shutdowns, Peter's experience in mining and underground projects is vast.



**MATT
HORNSBY**

High Voltage Testing + Commissioning Manager

Matt brings vast electrical engineering experience to JLE Group, with almost two decades of experience in the industry. With extensive front line, project and incident management experience, Matt plays a vital role in managing on underground teams.



**WAYNE
MUNRO**

JLE Design Manager

wayne.munro@jle.net.au | 02 6884 5973

Wayne joined the JLE Engineering team in January 2019 after completing over 40 years service with Essential Energy and its predecessors. He has spent 30 years working within the design division and the last 15 years as the 'Design Team Leader' of the Dubbo and Western Region. He has vast knowledge and experience in both overhead and underground electricity designs. Wayne will assist JLE customers to navigate successfully through the requirements of achieving electrical connections for their proposed developments.



**KATRINA
REYNOLDS**

Account Manager

accounts@jle.net.au | 02 6884 5973

Katrina has been with JLE for over 5 years. Her accounting experience within the trade industry extends 20 years as business and accounts manager during that period. Katrina runs the debtor creditor process at JLE and works closely with the corporate banking relationship managers and company accountant to ensure our business accounting procedures are on track and to plan.

**OUR MISSION IS TO BE THE BEST
ELECTRICAL ENGINEERING AND
CONTRACT COMPANY, FOCUSING
ON TURN KEY ENGINEERING AND
INSTALLATIONS AND ONGOING
MAINTENANCE SERVICES.**



Giving you the power

Want to know more?

JLE GROUP

Phone: (02) 6884 5973

Email: admin@jle.net.au

Orange Office

1 + 2 Stephen Place
Orange NSW 2800

Perth Office

19 Excellence Drive,
Wangara WA 6065

Dubbo Office

First Floor, 7 Energy Place
PO Box 4838
Dubbo NSW 2830

jleelectrical.com.au

